

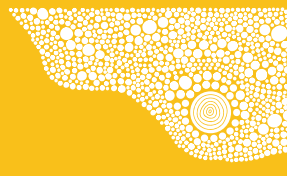


## INSIDE

**An event-filled summer**  
Pages 4-5

**Biodiversity flourishes**  
Pages 6-7

**Local artist's tribute to fallen  
heroes**  
Pages 8-9



## MAYOR'S MESSAGE

Summer at the beach might look a little different for us this year, but we still have 9 kilometres of coastline to enjoy.

Our coast path stretches all the way from Glenelg North to Kingston Park and is perfect for a leisurely stroll, with many spots to stop along the way for a coffee, lunch or some retail therapy.

If you haven't already registered for the Summer Plan Dining Cashback program, this is a great way to support your favourite local pub, café or restaurant, and get up to \$50 back on your bill.

Designed to support hospitality businesses and seafood retailers that are directly impacted by the algal bloom over the summer

months, all South Australians (over the age of 18) can enter the ballot to win a 50% cashback offer, and I know of lots of amazing family-run cafes and businesses who would love your support. Find out more at [southaustralia.com/diningcashback](https://southaustralia.com/diningcashback)

It fills me with pride and joy to see the accessible beach mat rolled out on Glenelg Beach each summer, which can be used by anyone - including people with prams, people using walking aids or by people who just want an easier path to the water over the soft sand.

Thank you to our amazing community for your continued support of Jetty Road Glenelg traders during the transformative and once-in-a-generation construction works.

We feel proud to deliver a project that will ensure the longevity of this

much-loved precinct for generations to come including new underground infrastructure and accessible and significantly wider footpaths to boost pedestrian safety.

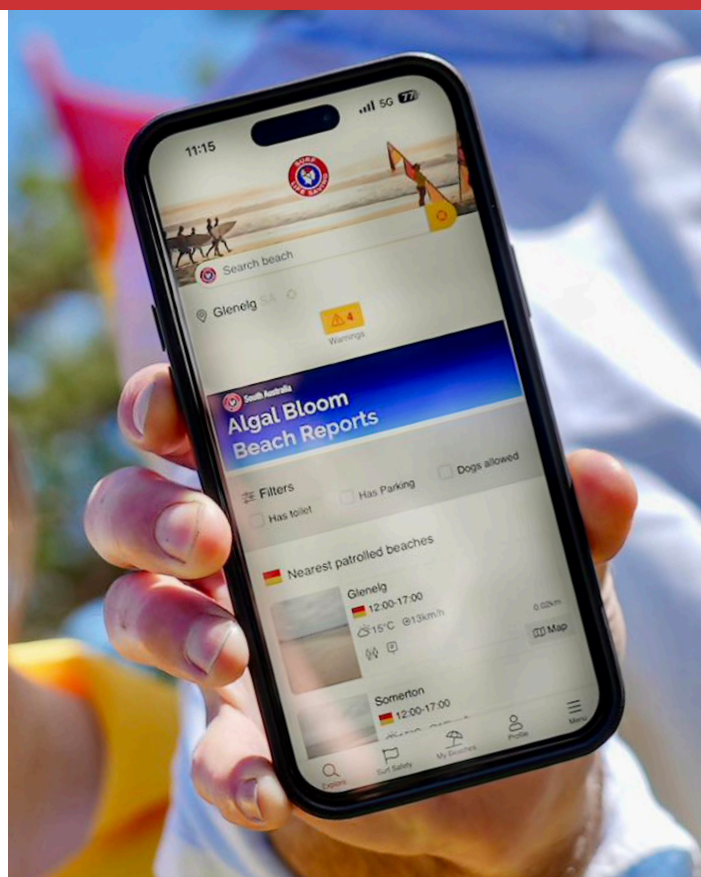
The Jetty Road/Colley Terrace corner will soon be unveiled as the final pavers are laid and the plaza look comes to life. The entire project is on track to be completed in the second half of this year, which is about 18 months earlier than the original plans.

On a final note, I wish all Holdfast Bay residents, businesses and visitors a happy and prosperous 2026 and I look forward to the opportunities that lay ahead.



**Amanda Wilson**  
Mayor, City of Holdfast Bay

## STAY SAFE THIS SUMMER



Get daily reports on algal bloom conditions at our beaches this summer through Surf Life Saving Australia's Beachsafe app.

As part of the State and Federal Government's Algal Bloom Summer Plan, the free Beachsafe app and website provide updates on water colour, the presence of unusual foam and the most recent beach cleaning times. This is to help beachgoers make informed decisions about how best to enjoy their visit and includes our local beaches at Brighton, Glenelg, Seacliff and Somerton Park.

SA Health's current advice is that beaches can still be enjoyed, but it is best to avoid foamy or discoloured water, which may cause irritation.

Surf Life Saving SA also advises people to always swim at patrolled beaches and between the red-and-yellow flags, never swim alone or under the influence of alcohol or drugs, and learn how to identify and avoid rips.

If you get into trouble in the water, stay calm, float, and signal for help by raising one arm and waving. Beach lovers should be sun-smart too by following the 'slip, slop, slap, seek, slide' approach, stay out of dunes and fenced areas, and avoid risky activities such as jumping from jetties or venturing near breakwater rocks.

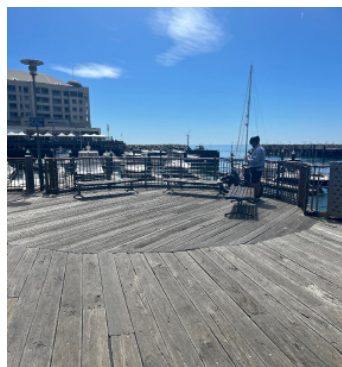
Visit [beachsafe.org.au](https://beachsafe.org.au)





## OUTDOOR DINING IS BACK ON JETTY ROAD, GLENELG

Significantly wider footpaths have created more space for people, particularly in the western end of Jetty Road. The Colley Terrace corner continues to be constructed as part of the Transforming Jetty Road Glenelg project, which is on track to be completed in the second half of this year. Follow the project at [transformingjettyroad.com](https://transformingjettyroad.com)



### Essential upgrades for marina boardwalk

A section of Edith Butler Pier Boardwalk, which runs alongside the Holdfast Shores apartments, adjacent Wigley Reserve, Glenelg, will undergo an essential upgrade starting later this month.

As a result, the walkway across the Patawalonga Lock will be temporarily closed for the first six

weeks of construction, with marked detours for pedestrians and cyclists.

The boardwalk in the north-west corner will be replaced and new balustrades installed.

The site compound in Tarniwarra Reserve, North Esplanade will remain until April 2026.

For more information visit [yourholdfast.com/edith-butler](https://yourholdfast.com/edith-butler)

## Nature playspace honours historic tree



Partridge House's rare Ombu tree is the centrepiece of the ground's new nature playspace, which opened late last year.

The play equipment includes a wooden climbing frame, swings, monkey bars and slide which were customised to blend in with the natural surrounds.

The grounds of Partridge House are open and accessible year-round.

Another new and improved playspace will be installed at Hove's Wattle Reserve this year. A new toilet block for Wattle Reserve is also being installed in the coming months.



### Outdoor fitness for all

Did you know we have four outdoor gyms around Holdfast Bay? You can find them at Wigley Reserve at Glenelg, Margaret Messenger Reserve at Glenelg East, Brighton Oval and John Miller Reserve, Somerton Park. To ensure people can use the equipment safely, we're hosting a series of come and try sessions to demonstrate how to use the equipment safely and effectively.

More information at [holdfast.sa.gov.au/whatson](https://holdfast.sa.gov.au/whatson)



## Did you know?

The Santos Tour Down Under kicks off the UCI WorldTour each year. In 2026, it celebrates 20 years since the Ochre Leader's Jersey was introduced.

This jersey is special to the race, created to reflect Australia's culture and history.



## HOLDFAST BAY TO GET TWO BITES OF THE TDU CHERRY

The 2026 Santos Tour Down Under is coming to and through Holdfast Bay twice this month - and we've got you covered in terms of the best vantage points, can't go past coffee spots and ideas for brunch, lunch and everything in between.

### Friday 23 January 2026 - Ziptrak® Men's Stage 3: Henley Beach to Nairne

The world's best professional cyclists taking part in the third stage of the 2026 Santos Tour Down Under, will make their way through the northern parts of Holdfast Bay – but not before hundreds of enthusiastic amateurs take the same route earlier that day.

The Adelaide Epic Ride, an Associated Event of the 2026 Santos Tour Down Under, starts at 6am at Henley Beach, with the pros rolling over the start line at 11.10am.

Both the amateurs and professionals will make their way along the Patawalonga frontage before crossing over the Patawalonga at the King Street Bridge. They'll ride past Wigley Reserve, along Anzac Highway before turning right onto Brighton Road and continuing to Diagonal Road.

#### Best vantage points

- Patawilya Reserve, Glenelg North
- Wigley Reserve, Glenelg
- Anzac Hwy & Brighton Rd

#### Must-visit coffee spots

- Little Eatery Glenelg, Wigley Reserve
- Veloce Paninoteca, Marina Pier
- Bobby's Coffee Store, Glenelg North

#### Best bets for brunch

- Francesca's Pizza + Sandos, Glenelg
- Gather & Grounds Café, Glenelg
- Handsome Max, Glenelg East

#### Lunching Local

- Watermark Glenelg
- Junipers on the Marina, Marina Pier
- Enuf Café & Burgers, Glenelg North
- More at Jetty Rd, Glenelg





## Glenelg Ice Cream Festival returns...

Friday 6 February 2026

The fourth instalment of the Glenelg Ice Cream Festival is back this February and you're invited to join us for SA's biggest celebration of all things sweet.

This iconic summer event transforms Jetty Road, Glenelg into a vibrant street party with some of the state's best artisan makers alongside local favourites; pop-up stalls, delicious food, live entertainment, kids' activities and extended shopping hours.

Plus we're expanding our dog-friendly zone.

**See you at Jetty Road, Glenelg  
4pm – 10pm.**



## More dates for your diary

### Glenelg Air-Raid Shelter Open Day

Sunday 18 January, 1pm - 3pm  
Rugless Terrace, Glenelg East

### Australian Toys 1880-1965: The Luke Jones Collection

On now until Sunday 22 February 2026  
Bay Discovery Centre, Glenelg

### Moseley Beach Club

On now until April 2026  
Glenelg Beach

### Mix 102.3 Giant Wheel

On now until May 2026  
Moseley Square, Glenelg

### Asia Street Food Festival by the Sea

Thursday 12 - Sunday 22 February 2026  
Glenelg Foreshore

### Fringe Foreshore Friday

Friday 27 February 2026  
Glenelg

See more at  
**[holdfast.sa.gov.au/whatson](http://holdfast.sa.gov.au/whatson)**  
or scan the QR code



## Saturday 24 January 2026 - THINK! Road Safety Men's Stage 4: Brighton to Willunga Hill

Brighton is back on the race schedule for the third year in a row, providing the perfect backdrop for the world's best cyclists.

They'll start the fourth stage, and 176km trek, on the Brighton Esplanade and will head south, travelling through Seacliff as they make their way all the way to Willunga Hill.

The stage officially starts at 11.10am, but the Tour Parade will roll in around 9.30am, followed by the cyclists a short time later.

### Best vantage points

- Brighton Jetty
- Bindarra Reserve, Brighton
- Angus Neill Reserve, Seacliff
- Seacliff Beach Hotel

### Must-visit coffee spots

- Brighton Jetty Bakery
- Roast Retreat, Brighton
- The Seller Door, Brighton



### Best bets for brunch

- Alimentary Eatery, Brighton
- Big Shots Café, Brighton
- Juniper & Pine Café Restaurant, Brighton

### Lunching Local

- In Thais Café & Noodle Bar, Brighton
- The Alchemists' Kitchen, Brighton
- Saigon Oi - The flavours of Vietnam, Brighton



# BIODIVERSITY FLOURISHES ACROSS HOLDFAST BAY

Native plants are flowering, native bees are buzzing and other local wildlife are benefiting from the significant increase in biodiversity across Holdfast Bay - in particular, in our reserves and open spaces.

And the improvements are not just visual - we've got the stats to prove it, gathered over the past seven years.

Council's 2024-25 surveys show that the average biodiversity score across our natural sites and reserves has risen from 12.8 in 2018 to 17.6, out of a possible 45 - a 37.5% increase - exceeding the targets set in the Environment Strategy and Our Holdfast 2050+ Strategic Plan.

But some individual sites have seen a staggering increase in their biodiversity score, of up to 900% at one site in Glenelg North.



## What is biodiversity and what does it mean for Holdfast Bay?

Local native biodiversity refers to the rich variety of plant and animal species that occur naturally. Fundamental to this are local native plants, which support our wonderfully unique local native wildlife and help maintain ecosystem balance and resilience.

For example, native plants support native insects, which are essential food sources for a variety of birds and mammals. Native plants also provide ecosystem benefits such as soil retention, water reduction and pollination, which are vital for maintaining ecosystem health and resilience.

## Glenelg North's reserves shine

Shannon Avenue Reserve in Glenelg North showed the strongest improvement overall, lifting its biodiversity score from eight in 2018 to 40 in 2024 - a 400% increase. The reserve was one of four revegetated as part of the Warriparri / Sturt River Greening Project and the addition of 2500 native plants resulted in the completion of Holdfast Bay's first biodiversity corridor, which enables native animals to move safely through a connected pathway of indigenous vegetation.

Tree planting and the installation of Treenet inlets, which divert stormwater to water street trees and other vegetation, completed the project with support from Green Adelaide grants and matched by Council funding.

Similar work was also undertaken at the Bob Lewis, Stewart Avenue and Fordham reserves in Glenelg North - historically the suburb with the lowest level of local native biodiversity.

Across all four reserves, approximately 10,000 local natives were planted, weeds removed and habitat features added such as wildlife boxes and rock placements.

### Biodiversity scores:

- Bob Lewis Reserve: 8 to 35 (+337%)
- Stewart Ave Reserve: 3 to 30 (+900%)
- Fordham Reserve: 9 to 33 (+266%)

Another positive outcome has been the partnership with the Friends of Sturt River Landcare group, which continues to engage residents and care for these sites.







## From zero to thriving

Sites which had no native biodiversity in 2018 also made strong gains, thanks to work by Council's Open Space team, including at:

- Davenport Terrace Pocket Park (Seacliff Park): 0 to 26
- Kauri and Community Sports Centre (Seacliff): 0 to 13
- A section of Brighton Oval and the Folkestone Road bike jump area: 0 to 11

Other significant improvements occurred at:

- Kent Street dunes (Glenelg): 3 to 28 (+833%) through regular weed control
- Pine Gully – zone 4 (Kingston Park): 9 to 31 (+244%) via stormwater infrastructure and biodiversity plantings, supported by Green Adelaide and the Friends of Pine Gully
- Gilbertson Gully – zone 8 (Seacliff Park): 16 to 37 (+131%), following weed control and revegetation.



## Rewilding and rare species brought back

Several endangered and vulnerable native plants have been reintroduced locally, with assistance from Green Adelaide and the South Australian Seed Conservation Centre.

Among the plants that have been reestablished are the yellow-flowering squat picris and sticky daisy bush.

Thanks to Green Adelaide's rewilding efforts, the painted dragon lizard (*Ctenophorus pictus*) has also made a return to the local area (pictured left).

## On the right track

Sections of Railway Terrace and Addison Avenue in Hove, along the rail corridor verge, also had a biodiversity score increase from 10 to 36 - a 260% improvement.

Residents took part in community planting days to revegetate the area with local native species, supported and funded by Council in collaboration with the Department for Infrastructure and Transport.

Ongoing care is now shared among residents, contractors and Council staff.

### Shannon Avenue Reserve, Glenelg North





## IN OUR COMMUNITY

### Preserving memories

A new book has honoured the voices of veterans whose stories are too often left untold.

*Capturing Conversations: A Snapshot of Local History* is the result of a partnership between Meals on Wheels SA and the William Kibby VC Veterans' Shed in Glenelg North.

The project paired volunteer writers with veterans to record their life stories and share them with the broader public.

Each interview serves as a reminder that legacy lives on through connection, becoming a treasured piece of our shared history.

Printed editions of the book have been made possible thanks to the support of a \$1000 Community Chest Grant from Council.

Find copies at our community centres, the Brighton and Glenelg libraries, Bay Discovery Centre and the William Kibby VC Veterans' Shed.

Or online at [mealsonwheelssa.org.au/capturing-conversations-veterans](http://mealsonwheelssa.org.au/capturing-conversations-veterans)



## Local artist's tribute to fallen

North Brighton's Sean Halfpenny never intended to be an artist.

Yet he's spent many hours over many months painting a mural, on corrugated iron no less, which spans 4.5 metres in height and is 20 metres wide.

With a brush in one hand, his paint palette in the other, he quietly and single-handedly transformed the façade of the William Kibby VC Veterans' Shed at Glenelg North into a stunning military mural.

It not only pays tribute to servicemen and women from all armed services, it also honours the memory of some local faces whose stories are intrinsic to Holdfast Bay's wartime history.

On the mural is William Kibby himself, who is a Victoria Cross recipient, a navy ship, the likeness to a Vietnam veteran and a

helicopter, which was inspired by an iconic Vietnam War photo.

Completing the mural is the representation of a RAAF aircraft and a portrait of Michael Herbert, who was lost in Vietnam for 39 years until the wreck of his aircraft was located and he was eventually returned home.

Sean, a war vet himself, says he hopes the mural will "do the people proud".

"I also hope that people look at it and ask questions about the portraits painted on the Kibby shed, and in doing so, learn about the story of these people – and that way their stories can be remembered for a while longer," Sean said.

"Since starting this project I have felt a connection to these people who served in the past, as they were locals to Holdfast Bay, just like I am."

Sean was an infantry soldier in the





Sean Halfpenny  
at the Vets' Shed mural.

## war heroes

Australian Army and was deployed to Afghanistan for 10 months in 2010.

After he discharged from the army in 2013, he sought therapy for PTSD through the Jamie Larcombe Centre, which is a purpose-built veterans' mental health precinct located at the Glenside Health Service Campus.

That was also the first time he picked up a paintbrush.

"Art is therapy for me, and I discovered it through the trauma recovery program I attended," Sean said.

"I did a painting called Gentle Soldier and I put it into a national art prize (Napier Waller Art Prize) and it went really well. It got exhibited at Parliament House and I've been doing art ever since.

"Jim, one of the fellas from the shed, who runs the Guitars for Vets program, then came to the art group and told me that they

were looking at getting a mural done and that's how it all evolved really.

"And because I'm a vet myself and a local, it just felt right".

The William Kibby VC Veterans Association successfully applied for \$10,000 in grant funding from the Department of Veterans' Affairs to bring the mural to life.

"We identified a need to raise public awareness of the huge sacrifice of service personnel and that a mural opposite the Michael Herbert Memorial Garden would serve as a fitting reminder," said Patricia Schlein, chairperson of the Millie Dorsch Sisterhood Group, which is a sub-group of the Vets' Shed.

And Millie hasn't been forgotten. She'll be honoured with a portrait when the mural is extended to encompass the Millie Dorsch Wellness Centre, which was added to the Vets' Shed last year.

## The people behind the faces on the mural



**William Kibby VC**  
1903 - 1942

Sergeant William Henry Kibby was awarded Australia's most prestigious military honour, the Victoria Cross, in 1943 for acts of bravery in WWII. He died in 1942 during the Second Battle of El Alamein in Egypt. He was living at Helmsdale, now known as Glenelg East.



**Michael Herbert**  
1946 - 1970

Flying Officer Michael Patrick John Herbert and his navigator, Pilot Officer Robert Carver, disappeared in Vietnam in 1970. They were presumed killed. In 2009, the wreckage of their aircraft was finally discovered and they were repatriated to Australia.



**Millie Dorsch**  
1912 - 1942

Born in Brighton, Hulda Millicent Maria (Millie), was a Sister with the Australian Army Nursing Service. She and 64 other nurses and civilians were on board the SS Vyner Brooke when it was bombed in 1942. Millie was last seen floating on a piece of wood with a small child, presumed drowned.





## WHAT'S IN A NAME? GOOD NEIGHBOUR GARDENS

The Neighbours theme song had it right when it said that everyone needs good neighbours.

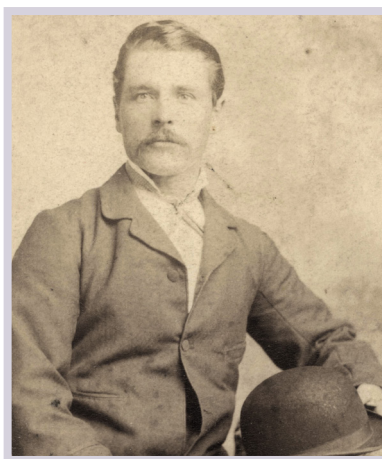
Local faces also inspired the name of a park on the corner of Vincent Avenue and Quandong Street in North Brighton: the Good Neighbour Gardens.

The park takes its name from its historic link to the now-defunct Good Neighbour Council. Formed in the late 1940s as part of Australia's post-war immigration strategy, the Council was a government-backed volunteer organisation whose 'good neighbours' helped families settle into their new communities.

The garden served as both a symbolic and practical space for bringing people together, but it also reflected the era's pressures toward assimilation and cultural

conformity. By the 1970s, as policy shifted towards multiculturalism, Good Neighbour Councils across the nation, including South Australia's, were phased out and replaced by modern migrant-settlement services.

The site's history, however, stretches even further back, and a plaque installed in October 2025 honours this earlier legacy.



Before the site became a reserve, it was once a pug hole, from which clay was extracted for brickmaking. From 1914 to 1938, the site was home to Dunrobin Bricks, a local brickmaking company whose products helped shape the Brighton community.



Dunrobin Bricks was owned and operated by Henry Inkley, pictured centre, and his three sons, Edgar, Bert and Leslie.

At the plaque unveiling, Hazel Inkley, Leslie's daughter-in-law, attended to honour her husband's family and their long connection to the area. Sadly, she passed away later the same month but had written to Council earlier saying that seeing the family name recognised at the site fulfilled "a long-awaited dream".

The City of Brighton (now part of the City of Holdfast Bay) acquired the site in 1948, initially using it as a dump before filling in the former clay pit. It was later transformed into the Good Neighbour Gardens, known today for its lawns, flora, and colourful playground.

More recently, community planting events have been held there to create a butterfly habitat and enhance biodiversity, breathing new life into the park's name and restoring its meaning as a place genuinely centred on civic connection.



Photo: Setting plaque stone, 1964



# HOLDFAST HERO

Staying active is something Tony Lee enjoys in retirement. After owning a steel fabrication business for 30 years, he has found fulfilment in contributing to the community in a new way.

For the past two years, he has supported general maintenance at the Holdfast Bay and Glenelg North community centres, from tending the gardens to cleaning building exteriors, taking out bins and more.

"Previously, I had lots of responsibility, staff to manage and customers to serve and satisfy," he said. "I sold the business at an opportune time and thought, 'I'm going to do something totally different - something where I can work at my own pace with minimal interruption and supervision', and it's great."

The 64-year-old has lived in the area since his youth and now resides in Glenelg with his family.

Tony encourages others to get involved. "It's been a real breath of fresh air to be among people of the calibre I've met through volunteering at the community centres.

"There's always plenty happening - yoga, kids' sensory play classes, Greek cooking, and Monday's Chatty Café, where people come to listen to a speaker, sit together and enjoy a coffee. It's really lovely."

Interested in volunteering? Explore all opportunities on our website at [holdfast.sa.gov.au/volunteer](http://holdfast.sa.gov.au/volunteer)



## ELECTED MEMBERS



**Mayor Amanda Wilson**  
8229 9911  
[awilson@holdfast.sa.gov.au](mailto:awilson@holdfast.sa.gov.au)

### Brighton Ward



**Cr. Jane Fleming**  
0421 084 696  
[jfleming@holdfast.sa.gov.au](mailto:jfleming@holdfast.sa.gov.au)

### Glenelg Ward



**Cr. Rebecca Abley**  
0433 421 457  
[rabley@holdfast.sa.gov.au](mailto:rabley@holdfast.sa.gov.au)

### Seacliff Ward



**Cr. Annette Bradshaw**  
0418 831 834  
[abradshaw@holdfast.sa.gov.au](mailto:abradshaw@holdfast.sa.gov.au)

### Somerton Ward



**Cr. William Miller**  
0430 315 378  
[wmiller@holdfast.sa.gov.au](mailto:wmiller@holdfast.sa.gov.au)



**Cr. Robert Snewin**  
0408 077 180  
[bsnewin@holdfast.sa.gov.au](mailto:bsnewin@holdfast.sa.gov.au)



**Cr. Allison Kane**  
0413 042 639  
[akane@holdfast.sa.gov.au](mailto:akane@holdfast.sa.gov.au)



**Cr. Clare Lindop**  
0417 507 954  
[clindop@holdfast.sa.gov.au](mailto:clindop@holdfast.sa.gov.au)



**Cr. Monique O'Donohue**  
0408 081 935  
[modonohue@holdfast.sa.gov.au](mailto:modonohue@holdfast.sa.gov.au)



**Cr. Anthony Venning**  
0416 052 425  
[avenning@holdfast.sa.gov.au](mailto:avenning@holdfast.sa.gov.au)



**Cr. Bob Patton**  
0419 991 892  
[bpattson@holdfast.sa.gov.au](mailto:bpattson@holdfast.sa.gov.au)



**Cr. Susan Lonie**  
0417 811 067  
[slonie@holdfast.sa.gov.au](mailto:slonie@holdfast.sa.gov.au)



**Deputy Mayor John Smedley**  
0419 822 541  
[jsmedley@holdfast.sa.gov.au](mailto:jsmedley@holdfast.sa.gov.au)





## CONTACT US

### Brighton Civic Centre opening hours

8.30am – 5pm Monday to Friday  
(excluding public holidays)  
24 Jetty Road, Brighton

All enquiries (including after hours):

**Brighton Civic Centre**  
8229 9999

**Brighton Library**  
8229 9988

**Glenelg Library**  
8179 9555

**Bay Discovery Centre**  
8179 9599

**Holdfast Bay History Centre**  
8229 9999

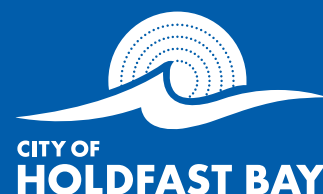
**Holdfast Bay Community Centre**  
8229 9897

**Email**  
[mail@holdfast.sa.gov.au](mailto:mail@holdfast.sa.gov.au)

**By post**  
All post should be sent to:

Name of Contact Officer/  
Department  
City of Holdfast Bay  
PO Box 19  
BRIGHTON SA 5048


**Social Media**  
 /CityofHoldfastBay  
 holdfastbay



**Alwyndor**  
8177 3200  
[customercare@alwyndor.org.au](mailto:customercare@alwyndor.org.au)  
52 Dunrobin Road  
HOVE SA 5048

**Sign-up to our free e-newsletter**  
to stay up-to-date and informed visit  
[holdfast.sa.gov.au/holdfastnews](http://holdfast.sa.gov.au/holdfastnews)



 **My Holdfast app**  
Available for free from the App store  
for iPhones or the Google Play store  
for Android phones.

