

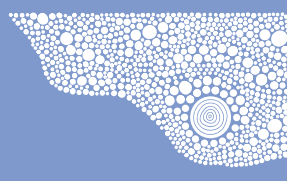
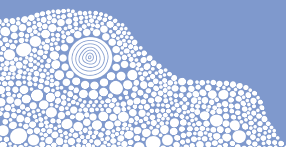


INSIDE

Tech time at our libraries
Page 2

**A day in the life of our
Field Services team**
Page 8-9

Meet Paddy and Charlie
Page 10



MAYOR'S MESSAGE

Having a sense of pride in where we live – where we choose to raise our families or to do business – is what every local government organisation would want for their residents.

As Mayor, it's what I champion on a daily basis.

In Holdfast Bay, we have a lot to be proud of. Our pristine coastline, our community-minded residents, our focus on sustainability and protecting our environment for future generations, and our capacity to host some of the state's best events.

In recent months, this included the world-premiere of Baleen Moondjan – a captivating performance on Glenelg Beach and the opening night of the Adelaide Festival.

With the spotlight cast on Glenelg, it was an opportune time to announce one of our most significant investments into the future of our city – Transforming Jetty Road, Glenelg.

This three-year, multi-million dollar project will undoubtedly transform our

flagship precinct – which supports more than 330 local businesses and up to a million visitors annually – into a modern, vibrant and world-class destination.

Our mission is to deliver a place where Holdfast Bay locals want to go and shop, eat and enjoy – and then show it off to their visiting family and friends.

I'm excited to see renewal works kick off later this year within the City zone which starts at the Brighton Road intersection and extends west to the Partridge Street/Gordon Street intersection.

Our priority will be ensuring the community can still easily access local services and shops while the work is undertaken.

The real magic will take place over the coming two years in particular with the Coast zone which includes the Moseley Street junction with Jetty Road, Colley Terrace and the fringes of Moseley Square.

As this is predominantly our tourism precinct, we want this area to have flexible spaces, widened footpaths and the creation of a plaza that can be closed to traffic for events and

activations particularly during the summer months.

Visit transformingjettyroad.com to read about the project in more detail and learn why this is an essential investment in our future that will benefit not only Glenelg but the full breadth of our city.

I'm also so pleased to see the completion of the new kiosk at Kingston Park, which is trading under the name Nest.

The community called for this for years and it was one of my election promises when I first became mayor, and it is wonderful to see this come to fruition.

You can read more and meet the team behind Nest on pages 6-7.



Amanda Wilson
Mayor, City of Holdfast Bay

LIBRARIES



Those wanting to test their digital and creative skills can do so at the Glenelg Library with the latest addition to public computers – a Media Lab.

It has a range of design programs that can be used for digital art, 2D animation and motion graphics, as well as dedicated photo-scanning equipment.

Our negative scanner and cassette to MP3 converter are also available to use within the library.

For those wanting to boost their tech knowledge and skills, our libraries offer other regular events and activities, including one-on-one digital assistance sessions.

STEAM Mates is a weekly interactive session for kids aged 5-8 with a focus on science, technology, engineering, arts and mathematics.

Tech Talk is our monthly, free community session which covers topics such as AI and Chat GPT.

holdfast.sa.gov.au/libraries



NEWS

A brand new, modern and accessible toilet block, with other public amenities like an outdoor shower, is coming to Seacliff and will be completed by summer.

Demolition works are underway at the existing toilet block on the Seacliff Foreshore, opposite the Seacliff Hotel.

The new building will be the same level as the footpath to provide accessibility to all members of the community, including those in wheelchairs or people who use mobility aids.

Once complete, there will be five unisex toilets, an accessible toilet and shower, outdoor public showers and handwashing station, and improved beach ramp access for pedestrians and surf club vehicles.

yourholdfast.com/seacliff

Upgraded toilets coming to Seacliff



New mural brightens up Glenelg seawall

A 100-metre long splash of colour has transformed the Glenelg Esplanade's seawall.

Adelaide artist Alex Bellas created the project with colourful illustrations of indigenous plants found in the surrounding dune systems.



Keep a look out for vandalised trees

The community is being urged to report any incidents of vandalised trees to Council.

Council is committed to protecting our urban forest and holding those responsible for acts of vandalism, which could lead to significant fines.

Please let us know about tree vandalism via email mail@holdfast.sa.gov.au or call us on **8229 9999**.



Local art on the move

A rubbish truck has never looked so good!

Solo's new street litter rubbish truck, which services Holdfast Bay, has been adorned with colourful landscape paintings created by well-known local artist Sue Norman, of sand mandala fame.

Each side has a different image depicting our beautiful coastline and featuring the Brighton Jetty and iconic Norfolk Island pine trees.

Sign-up to our free e-newsletter to stay up to date and informed.

holdfast.sa.gov.au/holdfastnews



WHAT'S ON

Play at the Bay

Now until 28 April 2024

Various locations

Anzac Day Dawn Service

25 April 2024

Arch of Remembrance, Brighton

Moseley Square, Glenelg

Glenelg Air-Raid

Shelter Open Day

25 April 2024, 11 am - 1 pm

Rugless Terrace, Glenelg East

Mix 102.3 Giant Wheel

Now until 12 May 2024

Moseley Square, Glenelg

Sand Castles Exhibition

Now until 26 May 2024

Bay Discovery Centre, Glenelg

National Reconciliation Week

27 May – 3 June 2024

Brighton Winter Solstice

22 June 2024

Jetty Road, Brighton

Scan the QR code to see more events.



Please note this information is correct at time of printing

Month-long celebration of history

The annual History Festival from 1 – 31 May is a celebration of the past. In 2024, the theme is Power.

For more information and bookings, visit holdfast.sa.gov.au/history-festival

Guided Tour of St Jude's Cemetery

St Jude's Cemetery in Brighton was established in 1854 and is the final resting place of many notable South Australians, including Sir Douglas Mawson and Catherine Helen Spence. Join us on a stroll and discover the hidden stories of this State Heritage listed cemetery.

Tuesday 7 May 2024, 11 am - 12.30pm

\$8 per person, bookings essential



Devonshire Tea at Dunluce Castle



Enjoy a guided tour of Dunluce Castle, followed by scones and tea in the dining room. Built for the Macully family in 1912, Dunluce Castle is an icon of Brighton. All proceeds go to Cancer Council SA and the Holdfast Bay History Centre.

Monday 20 May 2024,
10am, 12pm, 2pm

\$20 per person, bookings essential

Guided Tour of Paringa Hall

Built in 1882 for pastoralist James Francis Cudmore and designed by architect Edmund Wright, this historic mansion still contains much of its opulent decoration, including a stairwell of rare dark mahogany.

Saturday 25 May 2024,
10.30am – 12pm

\$20 per person,
bookings essential



HOLDFAST HERO



Residents who use Council's community bus service on Thursdays would know Audrey Minion's face well.

For almost a decade, she's been driving the bus and has loved getting to know her regular bus trippers and the stories they have to share.

"Everyone's got a really interesting story and they are so grateful to have someone

pick them up and take them shopping ... they love the social aspect of it," she said.

"It's just so good to see people getting involved and not just sitting at home by themselves, and you get to know more about the community because of the residents' involvement in the community."

Audrey's experience as a bus driver began in the 1970s, when she was also teaching at Craigmore High School.

"If you were in a country school, there

were lots of teachers in those days who also drove the bus," she said.

Audrey says she gets as much out of volunteering as the residents who use this essential service.

"We love helping people and just getting them to live a better life - we love doing that," she said.

"And it gives me a commitment and something to be proud of in a way, that I'm still involved and able to do that."

Three cheers for our volunteers

What do more than 300 people who live in the community have in common?

They're all dedicated volunteers who together spend around 47,000 hours each year serving the Holdfast Bay community and helping to provide essential services and programs.

Next month, from 20 - 26 May, we'll celebrate this special group of people as part of National Volunteer Week - Australia's largest annual celebration of volunteering.

If you want to join our team, there are a number of volunteering vacancies

across Alwyndor, at Glenelg's Bay Discovery Centre or outdoors with our team of environmental volunteers or at Brighton's Bike Pump Track.

We're also looking for more Community Bus drivers or assistants, personal transport drivers and people who can help out with home maintenance.

To find out how to get involved, visit holdfast.sa.gov.au/volunteer

All applicants require a National Police Check and Council can assist applicants with this, at no cost.



Volunteer Steve Markovitch at the Glenelg Air-Raid Shelter

KINGSTON PARK

Meet the people behind Nest... our new kiosk at Kingston Park

Tom and Ben Rodger are familiar faces in the Holdfast Bay area.

The brothers have been bustling around The Seller Door at Brighton – taking orders, making coffees or chatting with customers – since they opened the café in 2016.

It was their first foray into the hospitality industry having both come from corporate backgrounds.

“I hadn’t made coffee on a commercial coffee machine before, so it was a big learning curve,” said Tom, pictured on left.

Fast forward to 2024, the brothers have taken on another new venture – their second in Holdfast Bay but their third in total – with Nest at Kingston Park.

Officially opening the doors in March was a “pinch-me” moment for the pair.

“Grateful is the word we’re leaning on the most,” Tom said.

“We understand how special this place is now that we’re here, and for the community that’s been wanting this for so long”.

Council allocated \$1.4 million for the construction of the building which began in May 2023 within the grounds of the Brighton Beachfront Holiday Park, overlooking Kingston Park beach.



about a hundred years before they purchased it, and that means ‘The Nest’ in Spanish,” Tom said.

As is the case at The Seller Door, sustainability is a priority at Nest, with milk in a keg and on tap.

“We have the option for customers to buy refillable milk bottles which we think will really benefit people at the caravan park”. Tom said.

The milk comes in 18-litre kegs instead of plastic bottles. Once empty, they’re returned to the Fleurieu Milk Company for sanitising and refilling.

As the building grew, the name Nest came to light.

“We’re nestled between the cliff face of Kingston Park and we’re on the water’s edge here so we think it kind of has the characteristics of a nest - but it’s also a place where you’re nurtured and fed,” Tom said.

The brothers have also produced a wine label called Nest, with grapes sourced from their parents’ McLaren Vale vineyard of the same name.

“When our parents bought their property in McLaren Vale, it was named ‘El Nido’

“We were using about 6,500 bottles of milk a year, and overnight, we just switched that off,” Tom said.

“It’s crazy the change it’s making but that sustainability model has been at the forefront of everything we’ve designed here,” said Tom, adding that all the takeaway coffee cups and food containers are also compostable.

One big question remains through. Which one of the brothers gets to work at Nest with its stunning, absolute beachfront views?

“We’ll be fighting over it,” Tom said with a laugh, adding that they’ll “share the love”.



Tjilbruke story inspires artwork

When you next visit the new kiosk at Kingston Park, you'll be hard-pressed not to notice the four decorative panels that act as a partition between the kiosk's alfresco area and the caravan park next door.

The design was created by prolific Indigenous artist Allan Summer, pictured right, who was also the artist behind the On Kurna Land acknowledgement on the front of Our Place magazine.

Located on the northern side of the kiosk, the morning light shines through the intricate design that's been laser cut into the Corten steel, casting shadows across a long bench seat and onto the ground.

Allan says seeing his artwork in place and as part of the landscape at Kingston Park fills him with pride.

"From a Kurna point of view, to have a cultural footprint on the ground here at Kingston Park is something that we've wanted for a very long time and that makes me very proud, absolutely," he said.

Just a stone's throw from the kiosk site is the culturally significant Tjilbruke Spring which Allan says inspired the design.

"The theme for me was definitely Tjilbruke as this is one of Tjilbruke's campsites and the other thing that connected for me was using the elements too - fire, earth, sky and water," Allan said.

"I just wanted to keep it really coastal and make sure we have the theme there with Tjilbruke, family and community that would have been down here".



"Many Aboriginal communities would have been down this way, fishing and hunting and that sort of thing."

Allan began working as an artist in 2008 and says the story always comes first when creating a piece of work.

"I always try and think about the area, the people that lived in that area, the stories and the creation stories connected to that area," Allan said.

ON THE JOB

From pothole repairs to beach cleaning, graffiti removal and even playground equipment inspections, there's not much that the Field Services team isn't involved with.

Add to that street sweeping, lawn mowing, tree planting, signage installation and clearing out stormwater drains, the list of jobs is endless.

In an average year, the team responds to more than 5,500 customer requests, on top of the regular maintenance and mowing schedule.

Field Services staff also support major events held throughout the city providing traffic management and infrastructure installation, and they also support the Environment team in the work they do to protect wildlife, our gullies and coastline.

Throw in an unexpected storm event, when the Field Services team springs into action with all hands on deck for the subsequent clean up.

Considering the team has just 54 full-time staff, it's a big job keeping Holdfast Bay looking its best.



A day in the life of our

Open Space team

The Open Space team is dedicated to the city's reserves and playspaces, public gardens, North Brighton and St Jude's cemeteries.

There are a total of 105 reserves and garden areas that require regular maintenance and mowing and highly visited areas like Colley Reserve are mowed weekly.

Glenelg Oval has its own dedicated curator and Partridge House has a dedicated team for its public gardens. There are more than 18,000 street trees across the city which the team cares for.

On top of this around 500 new trees are planted by the team each winter and are watered for their first four years of life.





Rapid Response / City Clean

This team keeps the city looking beautiful, including our beaches.

Glenelg Beach is cleaned five times a week, from the beginning of October to the end of March, but the team is also responsible for the maintenance of the beach access points from Glenelg North to Kingston Park.

Other tasks include cleaning the showers along the Coast Path and the bins are regularly swapped and brought back to the Depot for cleansing.

The team also looks after drinking fountains, memorial seats, sculptures and shelters and are quick to act on removing graffiti from public places.

All streets across Holdfast Bay are swept every four weeks, with some busier streets swept more regularly.

The Rapid Response / City Clean team also conducts quarterly inspections on our 33 playgrounds checking for safety and compliance.



our Field Services team



Civil Works

Council's Civil Works team undertake maintenance and repairs on our 178 kilometres of roads, 389km of kerbs and all of the city's footpaths including paved areas.

In the past few years, an accelerated footpath program has seen more than 5,800m² of footpaths repaired, in addition to the regular repair program.

Regular inspections of our stormwater beach outlets ensure that water can flow freely out to sea.

WHAT'S IN A NAME...

WHO ARE PADDY AND CHARLIE?



If you've heard the names Paddy and Charlie mentioned in conversation, you might be surprised to learn that they're not people – they are trees.

The two Norfolk Island Pines, which can be found near the entrance of the Brighton Beachfront Holiday Park, are icons of Kingston Park.

They were planted in 1865 by George Strickland Kingston – the father of Strickland Gough, aka Paddy, and Charles Cameron, aka Charlie.

George Kingston himself was an influential figure in the early days of South Australia, having arrived in 1836 as the Deputy Surveyor to Colonel William Light – one of Adelaide's founding fathers.

Today, almost 160 years later, the pair of trees stand tall but not without some extra love and attention from Council's arborist and Open Space team.

The team has taken measures to address Paddy's declining health in recent years, which has included the installation of a water-filled barrier just behind the tree to allow water and liquid fertiliser to leak into the tree's root system slowly and continually.

Ladybirds were also released on both trees as a biological pest control method against mealybugs.



Weeds have been removed from the base of Paddy, pictured above on right, and future work will see vertical mulching around the tree to boost the soil's health.

If you're in the area, the trees are visible from the top of the cliff near Kingston House or from the pathway that runs parallel with the beach.

Meet Paddy and Charlie, the people

Strickland Gough Kingston, 'Paddy', 1848-1897

The eldest of the six Kingston children, Strickland Gough was referred to as Pat. He was a prominent criminal lawyer in South Australia, who was reportedly both brilliant and unstable and later died by suicide after a court case went against him. He's buried at the West Terrace Cemetery in the Kingston family mausoleum.



Charles Cameron Kingston, 'Charlie', 1850 – 1908

One of the younger sons of George Kingston, he was Premier of South Australia between 1893-1899 and contributed significantly to the Federation of Australia. Mr Kingston fathered multiple illegitimate children, one of whom was adopted by his wife Lucy, who was known as 'Mad Lucy'. A state funeral was held after his death in 1908. Lucy lived at Kingston House until her death in 1919.



SHARE YOUR VIEW

If you've heard of a parklet, now's your chance to experience one – and also provide feedback.

Parklets are used to create new public spaces, including outdoor dining for cafés and restaurants, bike racks or extra greenery.

They can add to the vibrancy of the streetscape, increasing activity in a safe manner in the area, while supporting local businesses.

Our trial parklet is located at the corner of Byron Street and Jetty Road, Glenelg, and will be in place until mid-year.

Visit yourholdfast.com/parklets or scan the QR code to share your view on the parklet trial.

You can also pin a parklet on an interactive map of where you'd like to see more parklets or vote for other people's suggestions.

Feedback closes on
Friday 28 June 2024.



ELECTED MEMBERS

Brighton Ward



Cr. Jane Fleming
0421 084 696
jfleming@holdfast.sa.gov.au



Cr. Robert Snewin
0408 077 180
bsnewin@holdfast.sa.gov.au



Cr. Anthony Venning
0416 052 425
avenning@holdfast.sa.gov.au

Glenelg Ward



Cr. Rebecca Abley
0433 421 457
rabley@holdfast.sa.gov.au



Cr. Allison Kane
0413 042 639
akane@holdfast.sa.gov.au



Cr. Bob Patton
0419 991 892
bpattson@holdfast.sa.gov.au



Mayor Amanda Wilson
0423 545 242
awilson@holdfast.sa.gov.au

Seacliff Ward



Cr. Annette Bradshaw
0418 831 834
abradshaw@holdfast.sa.gov.au



Cr. Clare Lindop
0417 507 954
clindop@holdfast.sa.gov.au



Deputy Mayor Susan Lonie
0417 811 067
slonie@holdfast.sa.gov.au

Somerton Ward



Cr. William Miller
0430 315 378
wmiller@holdfast.sa.gov.au



Cr. Monique O'Donohue
0408 081 935
modonohue@holdfast.sa.gov.au



Cr. John Smedley
0419 822 541
jsmedley@holdfast.sa.gov.au

- Therapy and Wellness
- Mobile Therapy Services
- Social Activities in the community
- Home Maintenance & Gardening
- Transition Care
- Residential Care
- Respite
- Home Care packages

Supporting the southern Adelaide Metro area.

8177 3200
alwyndor.org.au



CONTACT US

Brighton Civic Centre opening hours

8.30am – 5pm Monday to Friday (excluding public holidays)
24 Jetty Road, Brighton

All enquiries (including after hours):

Brighton Civic Centre
8229 9999

Brighton Library
8229 9988

Glenelg Library
8179 9555

Bay Discovery Centre
8179 9599

Holdfast Bay History Centre
8229 9999

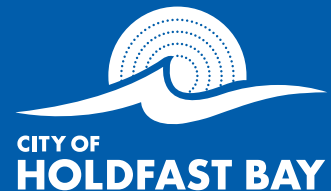
holdfast.sa.gov.au
yourholdfast.com

Email
mail@holdfast.sa.gov.au


By post
All post should be sent to:

Name of Contact Officer/
Department
City of Holdfast Bay
PO Box 19
BRIGHTON SA 5048

Social Media
 /CityofHoldfastBay
 holdfastbay



Alwyndor
8177 3200
customercare@alwyndor.org.au
52 Dunrobin Road
HOVE SA 5048

 **My Holdfast app**
Available for free from the App store for iPhones or the Google Play store for Android phones.